

ONTO-PERL: An API for supporting the development and analysis of bio-ontologies

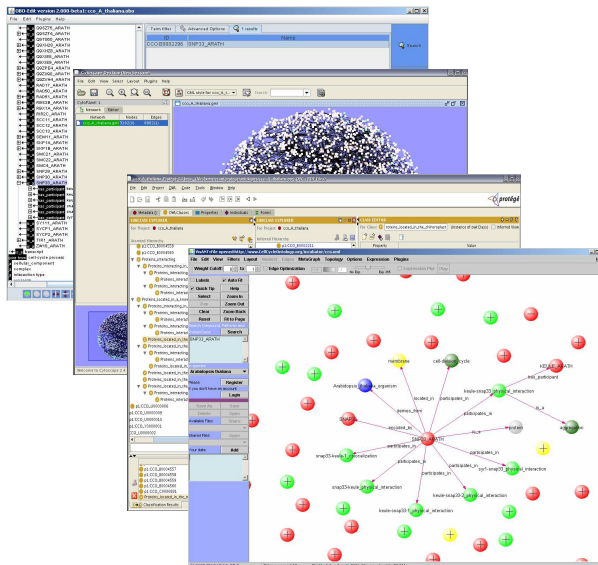
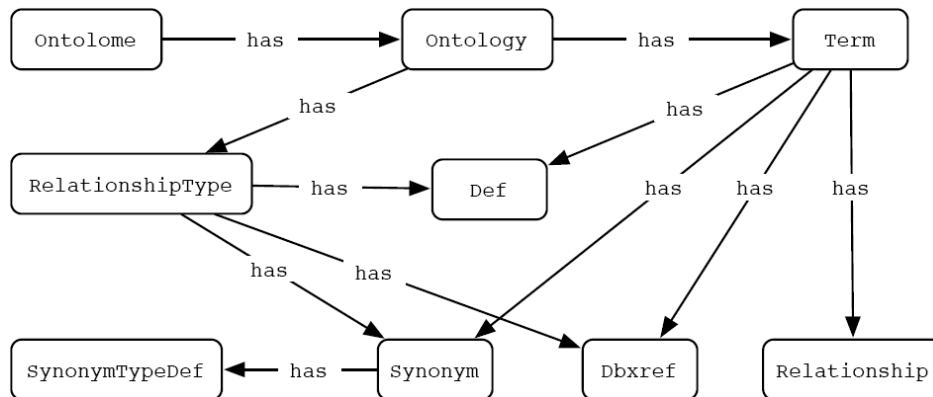


Table 1. Sample operations that can be executed with ONTO-PERL

No.	Operation
1	Find all the terms and/or relationships in a given ontology <i>o</i>
2	Retrieve all the descendants of a given term <i>T</i>
3	Retrieve all the ancestors of a given term <i>T</i>
4	Find the intersection of two given ontologies <i>o1</i> and <i>o2</i>
5	Find the terms by synonym or alternate label
6	List the terms that are obsolete
7	List all the terms with a given database reference
8	Find out the total number of terms and relationships
9	Merge two given ontologies <i>o1</i> and <i>o2</i>
10	Get a sub-ontology from a given ontology <i>o</i>
11	Find the path(s) between term <i>T1</i> and term <i>T2</i>